

**cintropur®**

WATER FILTRATION & TREATMENT



---

**DOMESTIC  
FILTERS**

**SL 160**  
ø 3/4"

**SL 240**  
ø 3/4" or 1"

**SL 240  
DUO-CTN**  
ø 3/4" or 1"

**SL 240  
TRIO-CTN**  
ø 3/4" or 1"



**SMART  
LINE** The most  
compact filter



## ■ GENERAL DESCRIPTION

Made entirely from premium quality synthetic material, CINTROPUR® filters are ideal for use with food products and drinking water.

The CINTROPUR® vane changes the liquid flow using centrifugal motion, forcing the larger particles down into the lower bowl, depending on the chosen filter sleeve micron-size.



## ■ BASIC PRINCIPLE

The protection of sanitary domestic, collective and agricultural water supplies by filtering out the solid particles (earth, sand, rust, etc.) suspended in the water. Ideally the protection filter will be placed at the entrance of the installation, in order to protect all the devices connected below.

## ■ APPLICATIONS

- **RESIDENTIAL:** Protection of sanitary networks supplied with domestic water, rainwater or well water. Filtration of water before softener, reverse osmosis or treatment by ultraviolet.
- **INDUSTRIAL:** Protection of sanitary networks, machine tools and all industrial machinery for water treatment. Filtration of water before high pressure cleaning machines (100 to 200bar / 1 500 to 3 000 psi) and very high pressure cleaning machines (1 500 to 2 500 bar / 21 000 to 35 000 psi).
- **AGRICULTURAL:** Filtration of watering (spraying) installations, filtration of water for animals, filtration of rainwater and well water.

## ■ ADVANTAGES

- High and constant flow rate
- Low pressure drop
- Centrifugal prefiltration with a cyclonal effect
- Robustness and reliability
- Fast and easy flushing out (on NW range)
- Exclusive system, ecological and not expensive (filter sleeve)
- Permanent visual control of the filter sleeve (transparent bowl).



# NW 18

ø 3/4"



# NW 25

ø 3/4" or 1"



# NW 25 TE-CTN

ø 1"



# NW 25 DUO-CTN

ø 3/4" and 1"

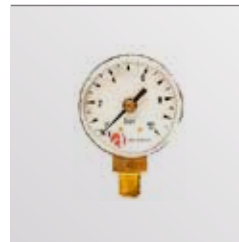


## ■ ACCESSORIES



### · WALL BRACKET

Unique model for the entire range, with 2 possible positions. Delivered standard on SL range + NW 25 DUO-CTN.



### · PRESSURE GAUGES 0-10 BAR 1/8"

(ON NW RANGE)

Before the assembly, drill fully and thread. Gives the pressure of the installation. Filter sleeve to be changed at 1 bar / 14.22 psi ΔP, or at least twice a year.



### · REFILLABLE CONTAINER CTN

This unique model of container was made for a treatment with activated carbon. Compatible for models SL240 TE-CTN + SL240 DUO-CTN + SL240 TRIO-CTN + NW25 TE-CTN + NW25 DUO-CTN + TIO.



### · RECEPTACLE FOR ACTIVATED CARBON

Adaptable for NW 25 TE and NW 32 TE, this tube and this strainer will be used for the treatment with activated carbon or with crystals.



### · CONNECTION NIPPLE 3/4" OR 1"

(ON SL RANGE)

Perfect for a quick and secure assembly of two SL heads.



### · DRAIN COCK 1/4" (ON NW RANGE)

Allows the draining under pressure of the larger particles collected by the centrifugal effect. The bowl is screwed into place **only** by hand (no tools required). Identical for NW 18 - NW 25 - NW 32.



Optimal filtration technique through a filter sleeve and a centrifugal vane.

# NW 32

Ø 1 1/4"



# NW 32

## TE

Ø 1 1/4"



# T10

Ø 1"



## ■ ADVANTAGES OF USING THE CINTROPUR® TE-CTN + ACTIVATED CARBON CINTROPUR® SCIN

1. Its large pore volume and pore size distribution makes it highly suitable for the improvement of taste and the removal of odour, chlorine, ozone, micropollutants such as pesticides and other dissolved organic substances.
2. The quantity of activated carbon which is used in the CINTROPUR® TE-CTN filters guarantees optimal results, as well as optimal lifespan. The poorer the flow rate, the greater the result.
3. The lifetime of the carbon depends on its application: for drinking water it is recommended to change the carbon every 3 months (max. 20 000 filter volumes) otherwise every 6 months at the most.
4. The internal mechanism of the TE filters ensures a maximum contact time between the untreated water and the activated carbon; guaranteeing optimal efficiency of treatment.
5. One of the best activated carbons available on the market is used, offering a very high adsorption capacity.
6. The advantageous price of activated carbon refilling: packaging specially designed for easy filter filling.

## ■ REFILL

### 1 ACTIVATED CARBON (CARTON OF 3.4 L / 0.90 US GALL)

Quality CINTROPUR® SCIN

Capacity of the available volumes for:

Cartridge CTN = 0.57 l (6 refills)

NW 32 TE = 1.7 l (2 refills).

### 2 FILTER SLEEVE (SETS OF 5 PIECES)

Non washable: 1µm\* / 5µm / 10µm / 25µm / 50µm / 100µm

Washable: 150µm\* / 300µm\*

\*Excepted SL160 + NW18



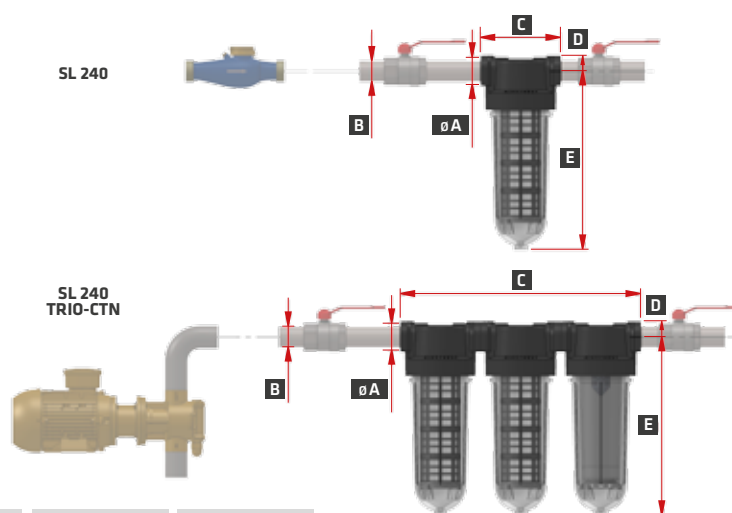


## TECHNICAL DATA SL

	SL 160	SL 240	SL 240 TE-CTN	SL 240 DUO-CTN	SL 240 TRIO-CTN
<b>Diameter of pipe</b>	3/4"	3/4" or 1"	3/4" or 1"	3/4" or 1"	3/4" or 1"
<b>Average flow rate (m<sup>3</sup>/h) ΔP = 0.2 bar</b>	3	3,5 / 4,5	0,5*	0,5*	0,5*
<b>Working pressure (bar)</b>	8	8	8	8	8
<b>Max. operating pressure (bar)</b>	12	12	12	12	12
<b>Max. operating temperature (°C)</b>	50	50	50	50	50
<b>Weight (Kg)</b>	0,68	0,9	1,23	1,85	3,05
<b>Standard filter sleeve (µm)</b>	25	25	-	25	100 and 25
<b>Available volume (litre)</b>	-	-	0,57	0,57	0,57
<b>Filtration surface (cm<sup>2</sup>)</b>	170	440	-	440	2 x 440

\* Value with activated carbon CINTROPUR® SCIN

## INSTRUCTIONS



	SL 160	SL 240	SL 240 TE-CTN	SL 240 DUO-CTN	SL 240 TRIO-CTN
<b>A (∅)</b>	3/4"	3/4" or 1"	3/4" or 1"	3/4" or 1"	3/4" or 1"
<b>B</b>	DN20	DN20 / DN25	DN20 / DN25	DN20 / DN25	DN20 / DN25
<b>C (mm)</b>	130	130	130	260	390
<b>D (mm)</b>	25	25	25	25	25
<b>E (mm)</b>	152	290	290	290	290

**THE BEST CHOICE  
FOR YOUR WATER**

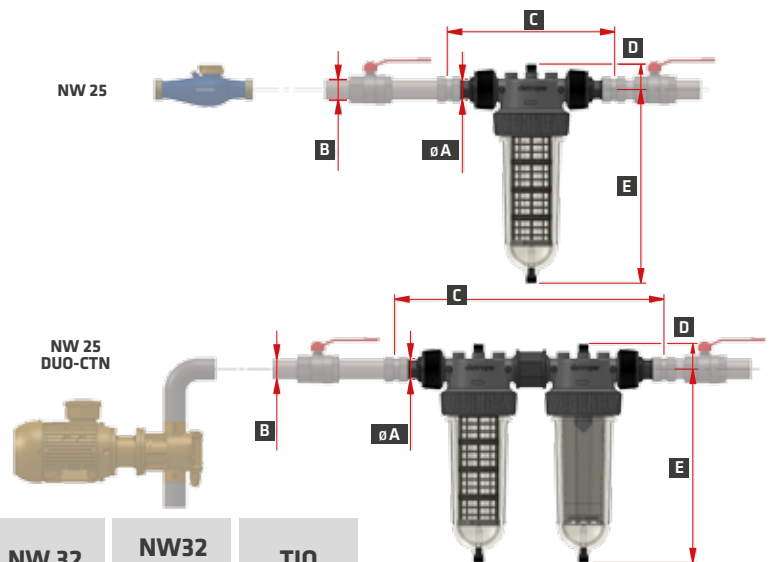


## TECHNICAL DATA NW

	NW18	NW25	NW25 TE-CTN	NW 25 DUO-CTN	NW32	NW32 TE	TIO
<b>Diameter of pipe</b>	3/4"	3/4" or 1"	1"	3/4" and 1"	1 1/4"	1 1/4"	1"
<b>Average flow rate (m<sup>3</sup>/h) ΔP = 0.2 bar</b>	3,5	5,5	0,5*	0,5*	6,5	0,5*	0,5*
<b>Working pressure (bar)</b>	10	10	10	10	10	10	10
<b>Max. operating pressure (bar)</b>	16	16	16	16	16	16	16
<b>Max. operating temperature (°C)</b>	50	50	50	50	50	50	50
<b>Weight (Kg)</b>	1,1	1,2	1,3	3,2	2,1	2,1	2,6
<b>Standard filter sleeve (µm)</b>	25	25	-	25	25	-	25
<b>Available volume (litre)</b>	-	-	0,57	0,57	-	1,7	0,57
<b>Filtration surface (cm<sup>2</sup>)</b>	190	450	-	450	840	-	335

\* Value with activated carbon CINTROPUR® SCIN

## INSTRUCTIONS



	NW 18	NW 25	NW25 TE-CTN	NW 25 DUO-CTN	NW 32	NW32 TE	TIO
<b>A (∅)</b>	3/4"	3/4" or 1"	1"	3/4" and 1"	1 1/4"	1 1/4"	1"
<b>B</b>	DN20	DN20 / DN25	DN25	DN20 / DN25	DN32	DN32	DN25
<b>C (mm)</b>	269	269	269	439	269	269	269
<b>D (mm)</b>	43	43	43	43	43	43	43
<b>E (mm)</b>	192	314	314	314	500	500	500